
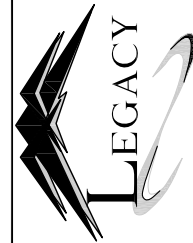




FRONT ELEVATION



Legacy Custom
Modular Homes, LLC

246 SAND HILL ROAD
SELINSGROVE, PA 17870
PHONE 570-374-3280
FAX 570-374-1122
WWW.LEGACYCMH.COM

Custom Modular Homes, LLC

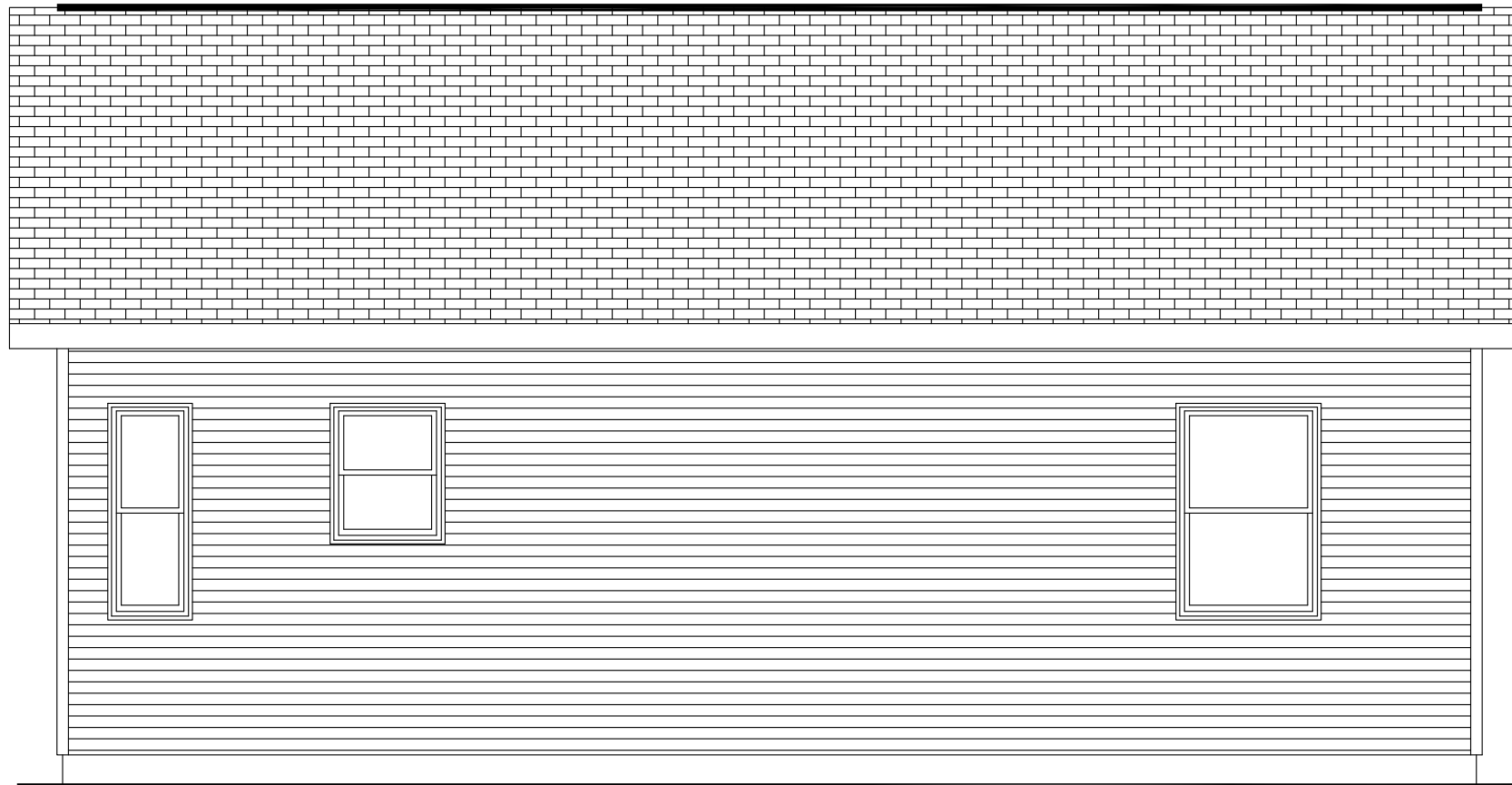
COPYRIGHT © 2008

THIS DOCUMENT AND THE
SUBJECT MATTER CONTAINED
HEREIN IS PROPRIETARY AND
MAY NOT BE REPRODUCED
WITHOUT THE WRITTEN
PERMISSION OF
"Legacy Custom Modular
Homes, LLC."

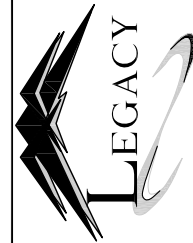
CUSTOMER/PROJECT:	NORTHEAST HOUSE 405 GILHAM STREET PHILADELPHIA, PA 19019
BUILDER:	K.C. HOMES, LLC 2109 MURRAY STREET PHILADELPHIA, PA 19115

REV#	DATE	REVISIONS	BY
1	10/2/08	FINAL	KNB
DRAWN BY:	KNB	DATE:	9/29/08
		SCALE:	
		CHECKED BY:	

FILE:	0#2156		
SQ.FT.:	977		
GROUND SNOW LOAD:	25	PSF	
WIND SPEED:	90	MPH	
TYPE:	31'-6"x31'-0" RANCH		
MODEL:			



REAR ELEVATION



 Legacy
Modular
2nd FLOOR
SIZES
FROM
\$19,900
www.legacyhomesllc.com

COPYRIGHT © 2008

THIS DOCUMENT AND THE
SUBJECT MATTER CONTAINED
HEREIN IS PROPRIETARY AND
MAY NOT BE REPRODUCED
WITHOUT THE WRITTEN
PERMISSION OF
"Legacy Custom Modular
Homes, LLC."

CUSTOMER/PROJECT:
NORTHEAST HOUSE
405 GILHAM STREET
PHILADELPHIA, PA 19019

BUILDER:
K.C. HOMES, LLC
2109 MURRAY STREET
PHILADELPHIA, PA 19115

REV#	DATE	REVISIONS	BY
1	10/27/08	FINAL	KNB
DRAWN BY:	DATE:	SCALE:	CHECKED BY:
KNB	9/29 /08		

FILE:	0#2156		
SQ.FT.:	977		
GROUND SNOW LOAD:	25	PSF	
WIND SPEED:	90	MPH	
TYPE:	31'-6"x31'-0" RANCH		
MODEL:			



LEGACY
Custom Modular Homes, LLC
2025 SE
F
www.
Legacy
Modu

THIS DOCUMENT AND THE
SUBJECT MATTER CONTAINED
HEREIN IS PROPRIETARY AND
MAY NOT BE REPRODUCED
WITHOUT THE WRITTEN
PERMISSION OF
"Legacy Custom Modular
Homes, LLC."

CUSTOMER/PROJECT:	NORTHEAST HOUSE 405 GILHAM STREET PHILADELPHIA, PA 19019
BUILDER:	K.C. HOMES, LLC 2109 MURRAY STREET PHILADELPHIA, PA 19115

REV#	DATE	REVISIONS	BY
1	10/27/08	FINAL	KNB
DRAWN BY:	KNB	DATE: 9/29/08	CHECKED BY:

FILE:	0#2156		
SQ.FT.:	977		
GROUND SNOW LOAD:	25	PSF	
WIND SPEED:	90	MPH	
TYPE:	31'-6"x31'-0" RANCH		
MODEL:			



THIS DOCUMENT AND THE
SUBJECT MATTER CONTAINED
HEREIN IS PROPRIETARY AND
MAY NOT BE REPRODUCED
WITHOUT THE WRITTEN
PERMISSION OF
"Legacy Custom Modular
Homes, LLC."

BUILDER: K.C. HOMES, LLC
2109 MURRAY STREET
PHILADELPHIA, PA 19115

E:		
O#2156		
<hr/>		
Q.FT.:	977	
<hr/>		
ROUND SNOW LOAD:	25	PSF
<hr/>		
ND SPEED:	90	MPH
<hr/>		
TYPE:	31'-6"x31'-0" RANCH	
<hr/>		
ODEL:		

- DESIGNED ONLY FOR ERECTION OR INSTALLATION ON A SITE-BUILT, PERMANENT FOUNDATION.
- NOT DESIGNED TO BE RELOCATED ONCE ERECTED OR INSTALLED.
- DESIGNED OR MANUFACTURED TO COMPLY w/ 2006 I.R.C.
CODE R-213.1 2005 NEC, 2006 IECC
- TO THE MANUFACTURER'S KNOWLEDGE IS NOT INTENDED TO BE USED OTHER THAN A
SITE-BUILT PERMANENT FOUNDATION.

WINDOW SCHEDULE:

MW	CLASSIC	MODULAR	SINGLE	HUNG	24210M	R.O.	2'-6	3/8"	x3'-1	5/8"
MW	CLASSIC	MODULAR	SINGLE	HUNG	1846M	R.O.	1'-10	3/8"	x4'-9	5/8"
MW	CLASSIC	MODULAR	SINGLE	HUNG	3046M	R.O.	3'-2	3/8"	x4'-9	5/8"
MW	CLASSIC	MODULAR	SINGLE	HUNG	3046M-2	R.O.	6'-4	3/4"	x4'-9	5/8"



*TEMPERATURE CONTROL VALVE TO BE INSTALLED TO ALL TUBS AND SHOWERS
*BUILDER IS RESPONSIBLE TO COMPLY WITH R613.2 (WINDOW SILLS) OF THE 2006 IRC (DONE ON-SITE IF APPLICABLE)



Legacy Custom
Modular Homes, LLC
246 SAND HILL ROAD
SELINSGROVE, PA 17870
PHONE 570-374-3280
FAX 570-374-1122
WWW.LEGACYCMH.COM

Custom Modular Homes, LLC

COPYRIGHT © 2008

THIS DOCUMENT AND THE
SUBJECT MATTER CONTAINED
HEREIN IS PROPRIETARY AND
MAY NOT BE REPRODUCED
WITHOUT THE WRITTEN
PERMISSION OF
"Legacy Custom Modular
Homes, LLC."

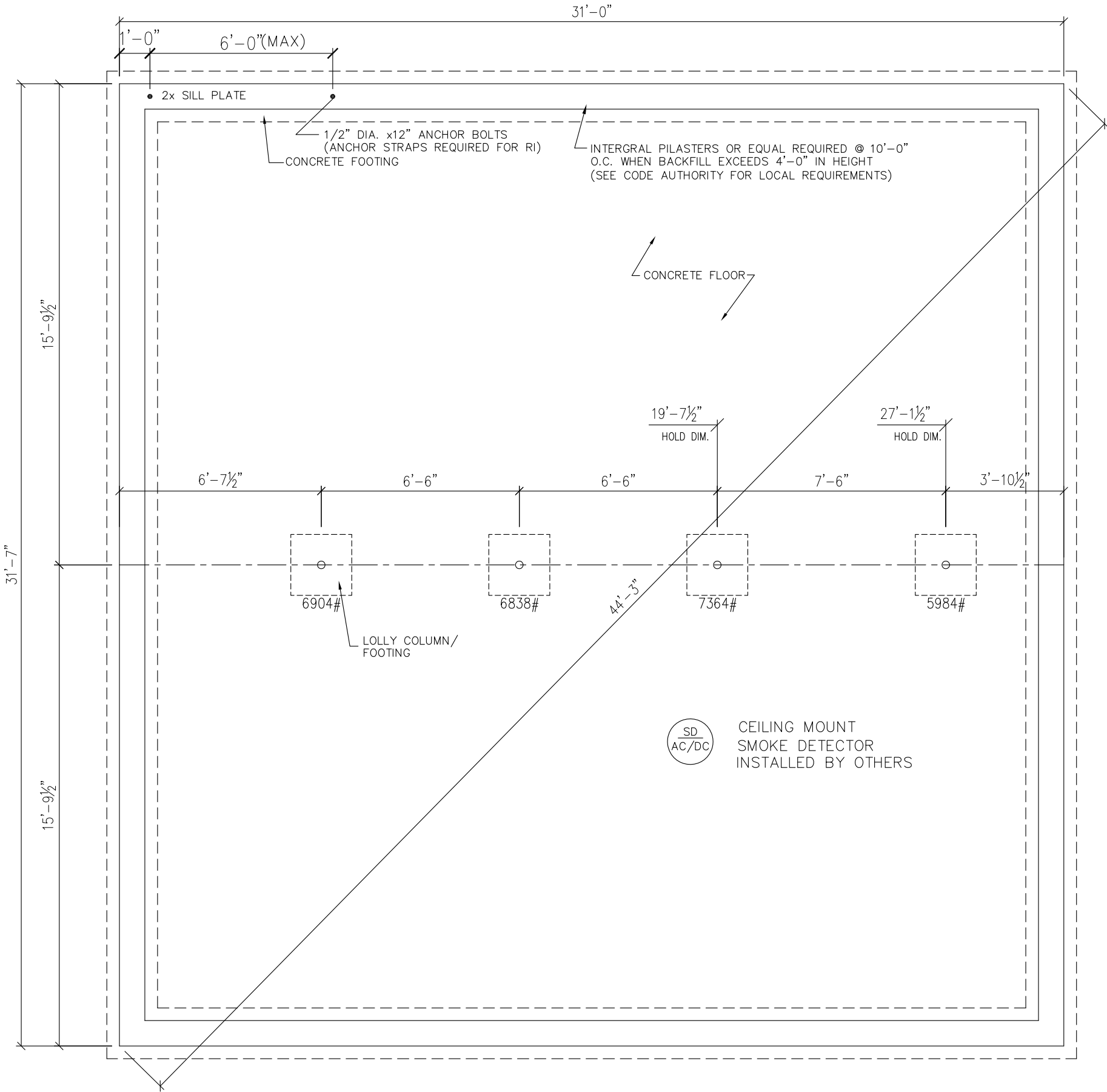
CUSTOMER/PROJECT:
NORTHEAST HOUSE
405 GILHAM STREET
PHILADELPHIA, PA 19019

BUILDER:
K.C. HOMES, LLC
2109 MURRAY STREET
PHILADELPHIA, PA 19115

FILE:				0g2156			
SQ.FT.:		977					
GROUND SNOW LOAD:		25		PSF			
WIND SPEED:		90		MPH			
TYPE:		31'-6"x31'-0" RANCH					
MODEL:							
REV#		DATE		REVISIONS		BY	
1		10/2/08		FINAL		KNB	
DRAWN BY:		KNB		DATE:		9/29/08	
				SCALE:		CHECKED BY:	

THIS FOUNDATION PLAN IS FOR DIMENSIONS ONLY. FOUNDATION WALLS, FOOTINGS, COLUMNS, PIERS, AND SLAB TO BE DESIGNED BY OTHERS TO MEET STATE AND/OR LOCAL CODES USING EXISTING SOIL ANALYSIS. MANUFACTURER ASSUMES NO RESPONSIBILITY FOR ERRORS IN THE CONSTRUCTION OF THE FOUNDATION. ANY AND ALL DIMENSIONS ARE TO BE CHECKED AND VERIFIED (AGAINST THE FLOOR PLAN "BUILDER COPY") BY BUILDER/DEALER PRIOR TO FOUNDATION CONSTRUCTION. THE BUILDER/DEALER MUST CONTACT MANUFACTURER WITH ANY DISCREPANCIES PRIOR TO THE START OF CONSTRUCTION.

MANUFACTURER WILL NOT ASSUME ANY RESPONSIBILITY IF BUILDER/DEALER/OWNER EXCEEDS MAXIMUM SPACING OF SUPPORTS AS SHOWN ON THIS DRAWING. WINDOW CENTER LINE LOCATIONS FOR RAISED RANCH AND/OR SPLIT-LEVEL MODELS TO BE OBTAINED FROM "BUILDER COPY" DRAWINGS.



- PA. NOTES:
- REQUIRED ON EACH FOUNDATION PLAN FOR PENNSYLVANIA.
1. A TRUE FOOTPRINT FOUNDATION PLAN MUST BE FURNISHED WITH EACH INDIVIDUAL FLOOR PLAN.
 2. ALL OPENINGS GREATER THAN 4'-0" MUST HAVE SUPPORT COLUMNS IN BASEMENT.
 3. IF FILL IS MORE THAN 5'-0" 12" BLOCK ON 20" X 10" FOOTING MUST BE USED.
 4. FOUNDATION DRAINAGE AND DAMPPROOFING PER CODE.
 5. ALL ELECTRICAL AND MECHANICAL INSTRUCTIONS TO CONFORM TO STATE AND LOCAL CODES.
 6. BASEMENT WALL AND CEILING INSULATION MAY BE SPELLED OUT TO MEET SECTION 29.41b & 29.41c.
 7. MIN. 6" FROM GRADE TO BOTTOM OF SIDING MAINTAINED ON SITE.
 8. PURCHASER RESPONSIBLE FOR ALL SERVICE ENTRY CONN. AND ON-SITE TESTING WHERE REQUIRED.
 9. FOUNDATION PRINTS MAY NEED TO BE SEALED BY A PROFESSIONAL ENGINEER WHERE REQUIRED.

FILE:		0#2156	
SQ.FT.:		977	
GROUND SNOW LOAD:		25	PSF
WIND SPEED:		90	MPH
TYPE:		31'-6"x31'-0" RANCH	
MODEL:			
REV#	DATE	REVISIONS	BY
1	10/2/08	FINAL	KNB
DRAWN BY:		DATE:	CHECKED BY:
KNB		9/29/08	
		SCALE:	

CUSTOMER/PROJECT:		NORTHEAST HOUSE	
		405 GILHAM STREET	
		PHILADELPHIA, PA 19019	
BUILDER:		K.C. HOMES LLC	
		2109 MURRAY STREET	
		PHILADELPHIA, PA 19115	

COPYRIGHT © 2008

THIS DOCUMENT AND THE SUBJECT MATTER CONTAINED HEREIN IS PROPRIETARY AND MAY NOT BE REPRODUCED WITHOUT THE WRITTEN PERMISSION OF "Legacy Custom Modular Homes, LLC."



Legacy Custom Modular Homes, LLC

246 SAND HILL ROAD
SELINSGOVE, PA 17870
PHONE 570-374-3280
FAX 570-374-1122
WWW.LEGACYCMH.COM

Custom Modular Homes, LLC